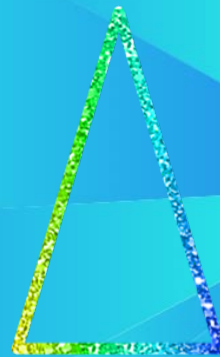
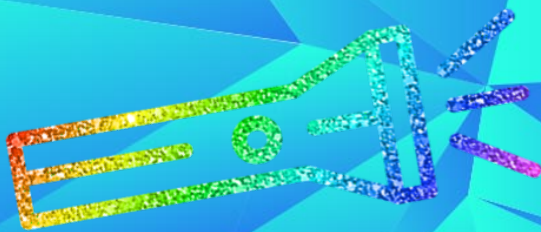


Shadows

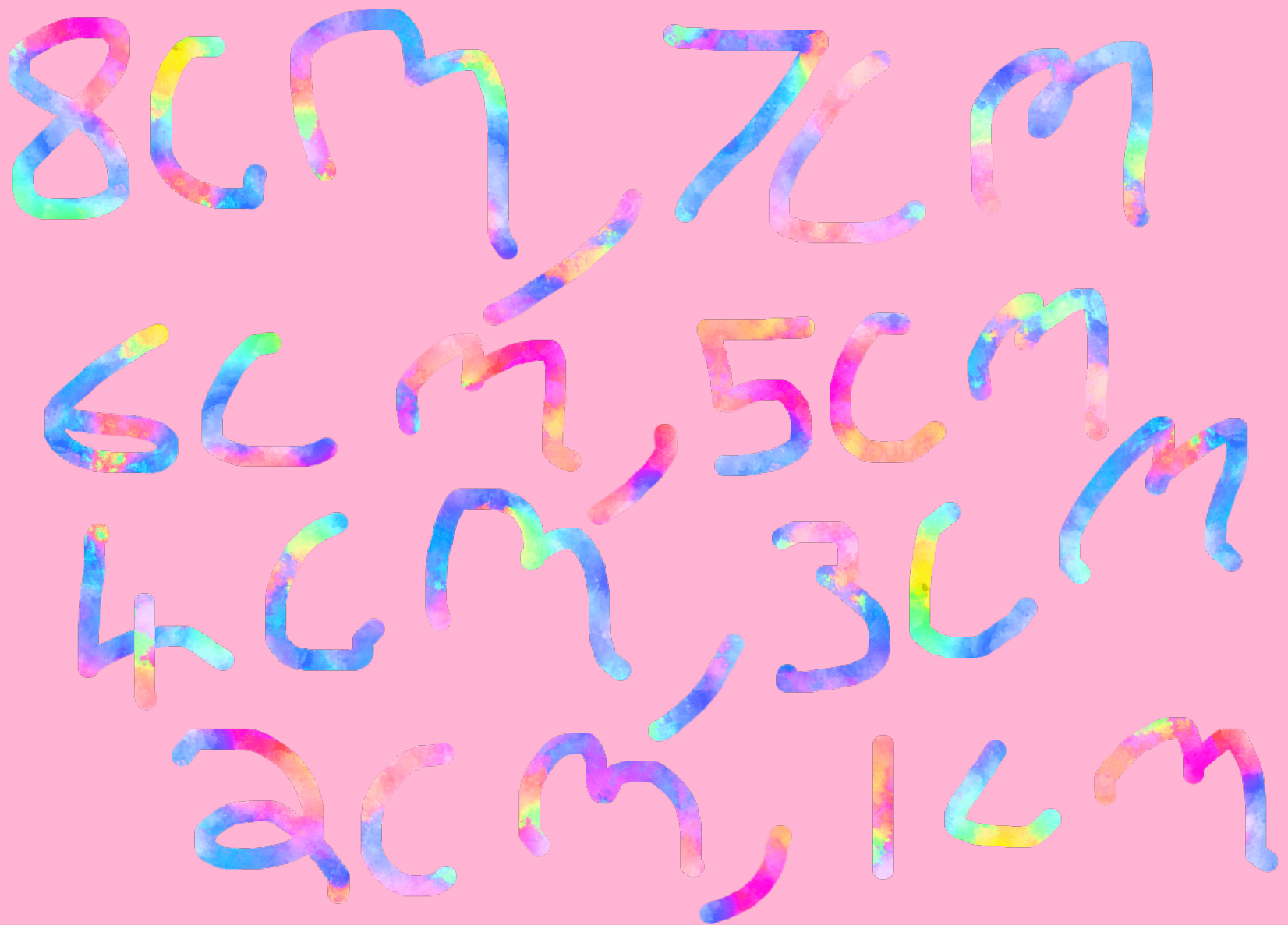
Written by ABBEY and
KYE



**Are
experiment
was to see if
the shadow
would get
bigger if are
object was
closer or
farther away**

My original data was incorrect because when the light source was 10cm the shadow was 23cm then 6cm then 9 and finally 14.

**Are data
should of
looked like
this**



**What we
should do
next time
is get a
brighter
light
source and
for me I
will have
to go
farther
away .**

Thank you for reading
shadows by abbey and
kye

Kye & Abbey

